

Premier[®]
SWIMMING POOL PRODUCTS

Vinyl Liner Pools

Vinyl Liners

NPT[®] Designer Surfaces



Latham

The NPT® Designer Surfaces collection, Stonescapes® and Jewelscapes® series, is exclusive to Premier.



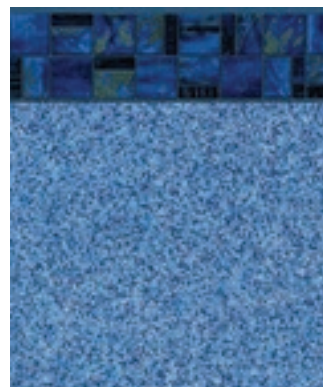
Equinox

Iolite
Duomax 27 mil



Escapes

Marina Blue
Duomax 27 mil



Verona

Iolite
Duomax 27 mil

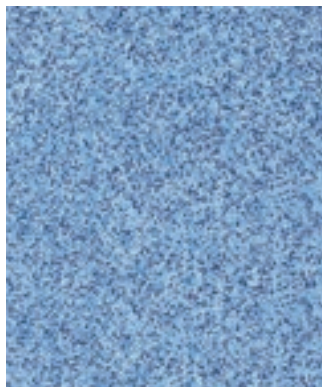


Verona

Marina Blue
Duomax 27 mil

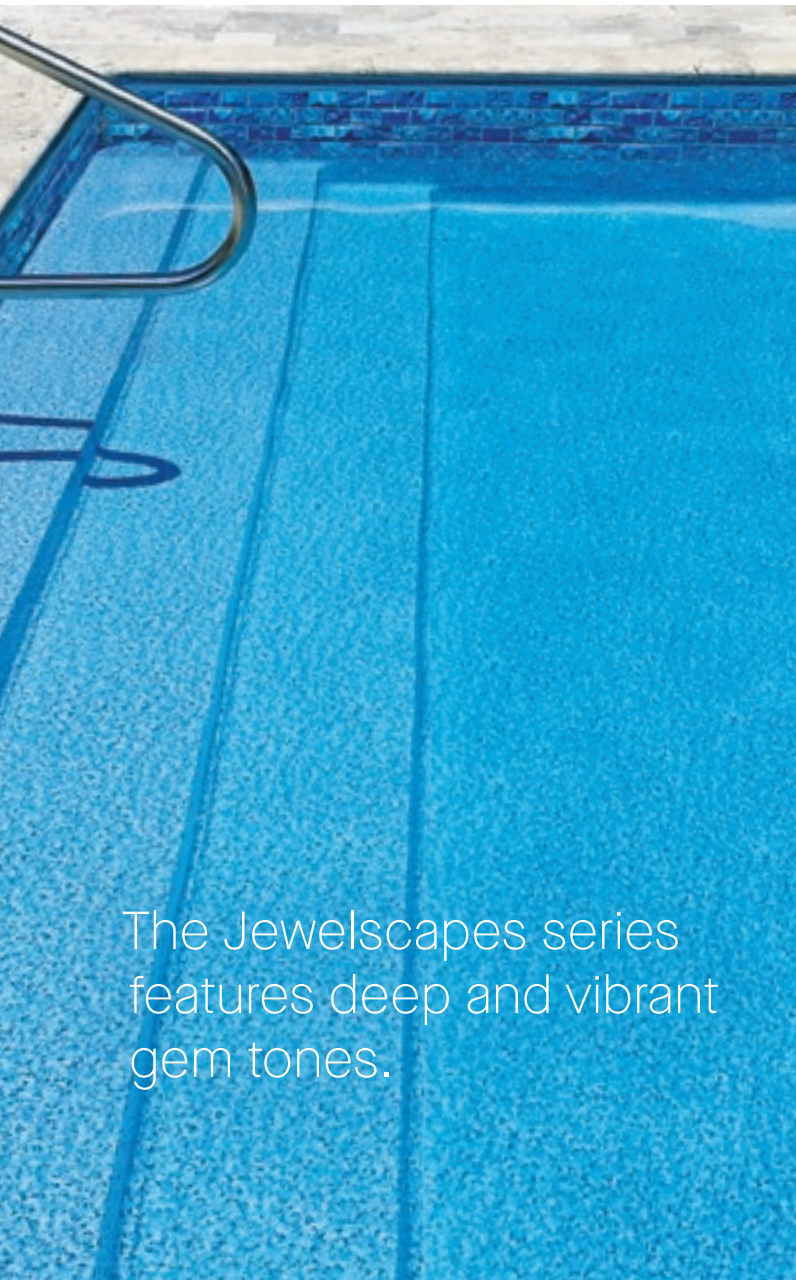


Iolite
20 mil



Marina Blue
20 mil

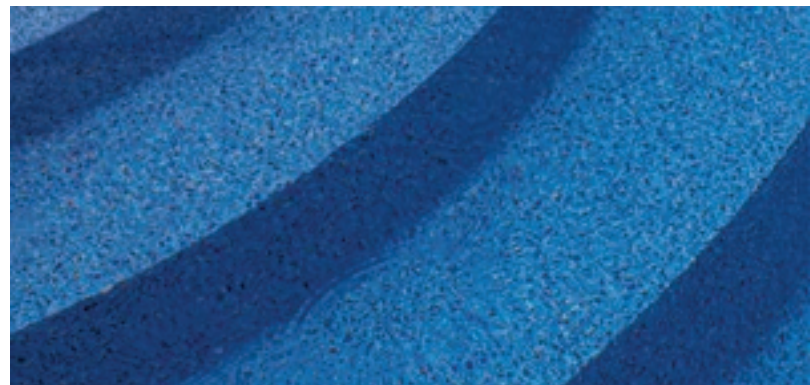




The Jewelscapes series features deep and vibrant gem tones.



The Stonescapes series alludes to the rich colors and textures found in natural bodies of water.



Aquarius

Tahoe Blue
Duomax 27 mil



Tahoe Blue
20 mil

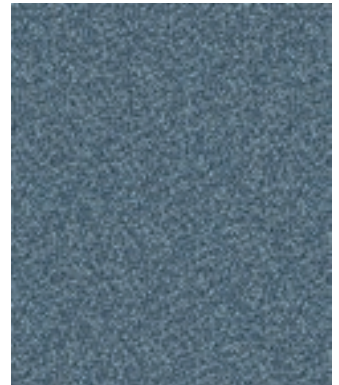


Aztec Cobalt

Aqua Blue
Duomax 27 mil

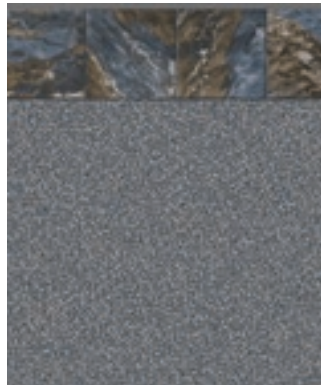


Aqua Blue
20 mil



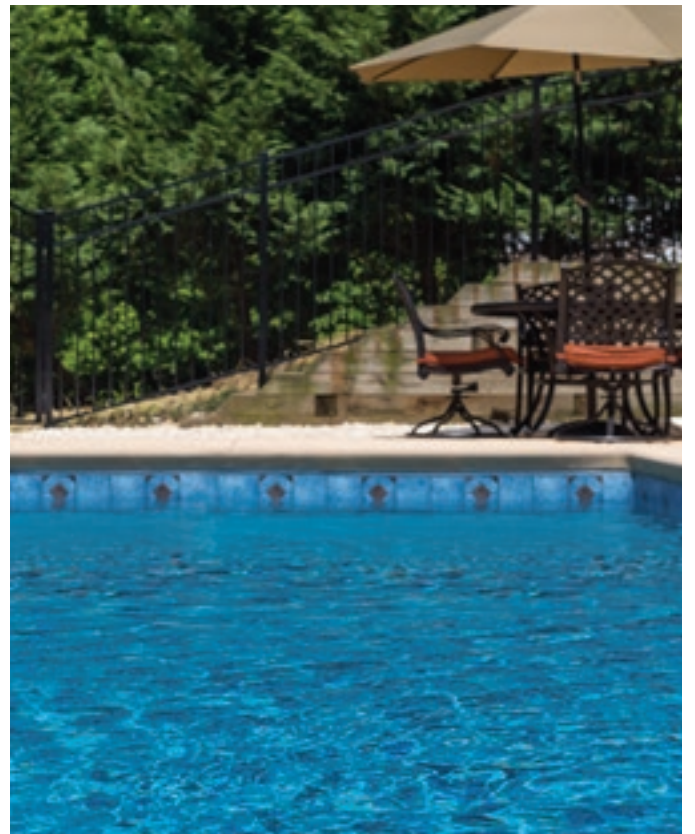
Ridgeline

Grey Tahoe
Duomax 27 mil



Grey Tahoe
20 mil



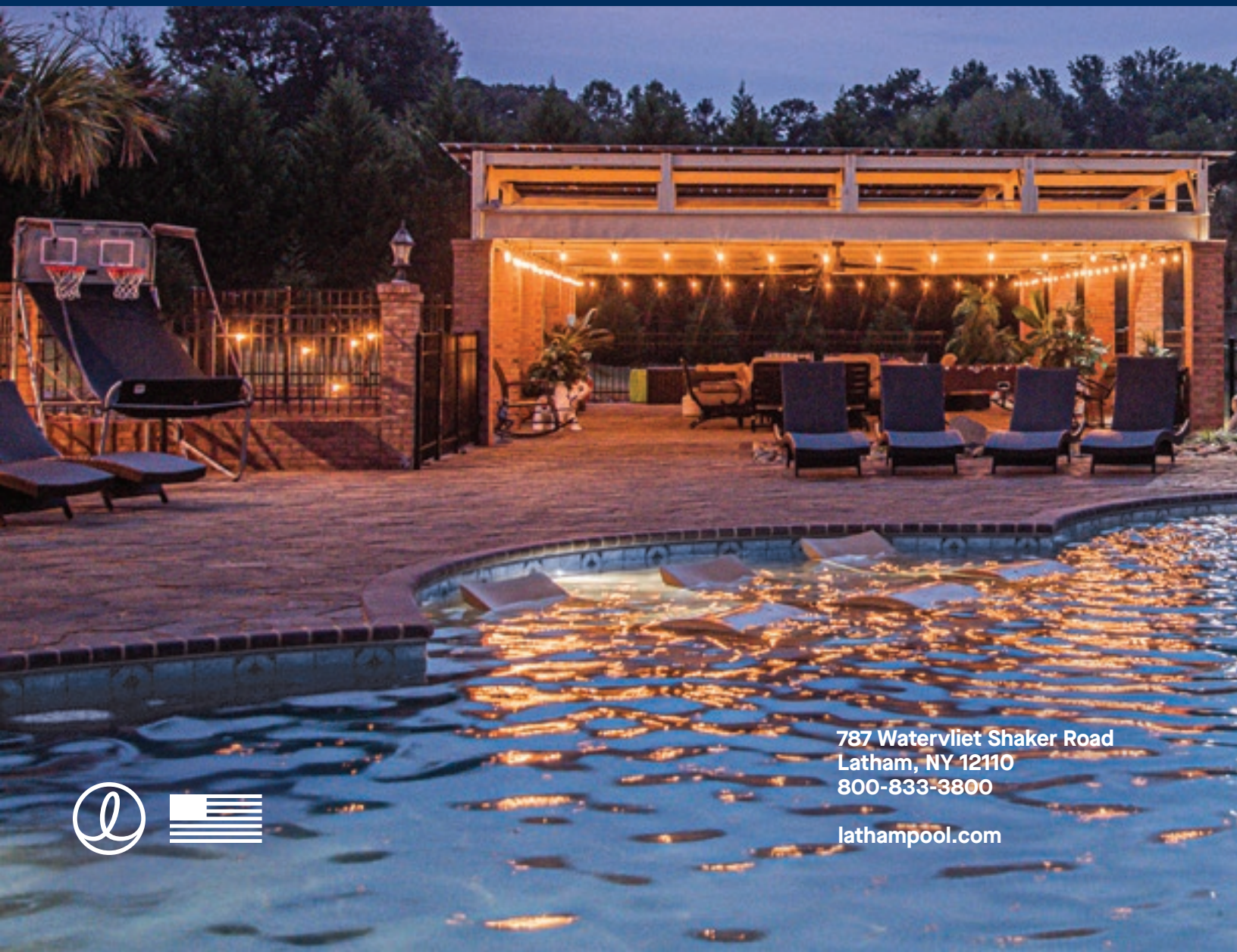


NOTICE: The manufacturer stands behind every product they produce pursuant to those representations which are stated in the written warranties. Your dealer/builder/contractor is an independent businessperson and not an agent or employee of the manufacturer. The manufacturer cannot and does not accept any responsibility for any representations, statements or contracts made by any dealer/builder/contractor.

The specifications in this brochure were believed to be true at the time of printing. However, specifications, standard equipment and options are subject to change without notice.

The manufacturer does not manufacture slides, diving boards, or any other diving equipment. Any use of such equipment must be in strict compliance with the equipment manufacturer's specifications, The Association of Pool and Spa Professionals' (APSP) Standards, as well as local building codes and regulations.

In some pictures, the safety line rope and floats, and safety signage have been removed from the pool for photographic purposes. The safety line should be permanently attached at all times. We also urge you to use handrails and grab rails in accordance with the APSP Standards.



**787 Watervliet Shaker Road
Latham, NY 12110
800-833-3800**

lathampool.com